

NKX3-2 Antibody (Center)
Affinity Purified Rabbit Polyclonal Antibody (Pab)
Catalog # AP17702c**Specification**

NKX3-2 Antibody (Center) - Product Information

Application	WB,E
Primary Accession	P78367
Other Accession	P70061 , P97503 , NP_001180.1
Reactivity	Human
Predicted	Mouse, Xenopus
Host	Rabbit
Clonality	Polyclonal
Isotype	Rabbit IgG
Calculated MW	34814
Antigen Region	3-2

NKX3-2 Antibody (Center) - Additional Information**Gene ID** 579**Other Names**

Homeobox protein Nkx-32, Bagpipe homeobox protein homolog 1, Homeobox protein NK-3 homolog B, NKX3-2, BAPX1, NKX3B

Target/Specificity

This NKX3-2 antibody is generated from rabbits immunized with a KLH conjugated synthetic peptide between 208-235 amino acids from the Central region of human NKX3-2.

Dilution

WB~~1:1000

E~~Use at an assay dependent concentration.

Format

Purified polyclonal antibody supplied in PBS with 0.09% (W/V) sodium azide. This antibody is purified through a protein A column, followed by peptide affinity purification.

Storage

Maintain refrigerated at 2-8°C for up to 2 weeks. For long term storage store at -20°C in small aliquots to prevent freeze-thaw cycles.

Precautions

NKX3-2 Antibody (Center) is for research use only and not for use in diagnostic or therapeutic procedures.

NKX3-2 Antibody (Center) - Protein Information**Name** NKX3-2

Synonyms BAPX1, NKX3B

Function Transcriptional repressor that acts as a negative regulator of chondrocyte maturation. Plays a role in distal stomach development; required for proper antral-pyloric morphogenesis and development of antral-type epithelium. In concert with GSC, defines the structural components of the middle ear; required for tympanic ring and gonium development and in the regulation of the width of the malleus (By similarity).

Cellular Location

Nucleus.

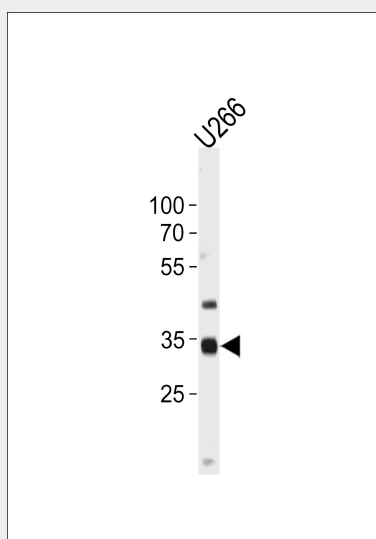
Tissue Location

Expressed at highest levels in cartilage, bone (osteosarcoma) and gut (small intestine and colon), whereas moderate expression is seen in trachea and brain. Expressed in visceral mesoderm and embryonic skeleton.

NKX3-2 Antibody (Center) - Protocols

Provided below are standard protocols that you may find useful for product applications.

- [Western Blot](#)
- [Blocking Peptides](#)
- [Dot Blot](#)
- [Immunohistochemistry](#)
- [Immunofluorescence](#)
- [Immunoprecipitation](#)
- [Flow Cytometry](#)
- [Cell Culture](#)

NKX3-2 Antibody (Center) - Images

NKX3-2 Antibody (Center) (Cat. #AP17702c) western blot analysis in U266 cell line lysates (35ug/lane). This demonstrates the NKX3-2 antibody detected the NKX3-2 protein (arrow).

NKX3-2 Antibody (Center) - Background

This gene encodes a member of the NK family of

homeobox-containing proteins. The encoded protein may play a role in skeletal development.

NKX3-2 Antibody (Center) - References

Hellemans, J., et al. Am. J. Hum. Genet. 85(6):916-922(2009)

Rodrigo, I., et al. Mol. Cell. Biol. 24(7):2757-2766(2004)

Tribioli, C., et al. Gene 203(2):225-233(1997)

Yoshiura, K.I., et al. Genomics 45(2):425-428(1997)

Tribioli, C., et al. Mech. Dev. 65 (1-2), 145-162 (1997) :